

HOW TO ORDER



Best way to figure out your size is to measure a T-shirt that fits well and choose the best match from the sizing below.



Please complete your order by writing the number of items you want in the relevant box.



Sorry - shaded box means item not currently available in this sizing – please enquire as we can probably do it for you in the next run.

CONTACT US

- 021 79 1000
- whackandblite@clear.net.nz
- www.whackandblite.co.nz
- P O Box 9773
Marion Square
Wellington 6141

WOMEN'S T-SHIRTS sizes

MEASUREMENTS	XS	S	M	L	XL	2XL
Body Width (cm)	40.5	43	45.5	48	51.8	55.5
Body Length (cm)	67.5	68.5	69.5	70.5	71.5	72.5

style	price	my order					
		XS	S	M	L	XL	2XL
Amphora	\$59.00						
John Parker orb	\$59.00						
Swan	\$59.00						*

*Please note 2XL Swan is not organic cotton



Amphora

MEN'S T-SHIRTS sizes

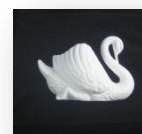
MEASUREMENTS	S	M	L	XL	2XL
Body Width (cm)	46	50	54	58	63
Body Length (cm)	71	74	77	79	81.5

style	price	my order				
		S	M	L	XL	2XL
Amphora	\$59.00					
John Parker orb	\$59.00					
McAlpine jug	\$59.00					



John Parker orb
(signature in black)

CUSHIONS	price	my order
Amphora square cushion (44 cm square)	\$139.00	
Swan square cushion (44 cm square)	\$139.00	
Swan oblong cushion (approx 53x33 cm)	\$149.00	



Swan

APRONS	price	my order
Swan polycotton	\$69.00	
Swan 100% cotton		
McAlpine jug polycotton		
McAlpine jug 100% cotton		



McAlpine jug

YOUR DETAILS

Name X
 Delivery address X
 Phone X
 Email X
 Any special requests? X

We will confirm your order and invoice you. On receipt of payment, your order will be dispatched.